



JCB TRACKED EXCAVATOR | JS 130 L T.A.B.

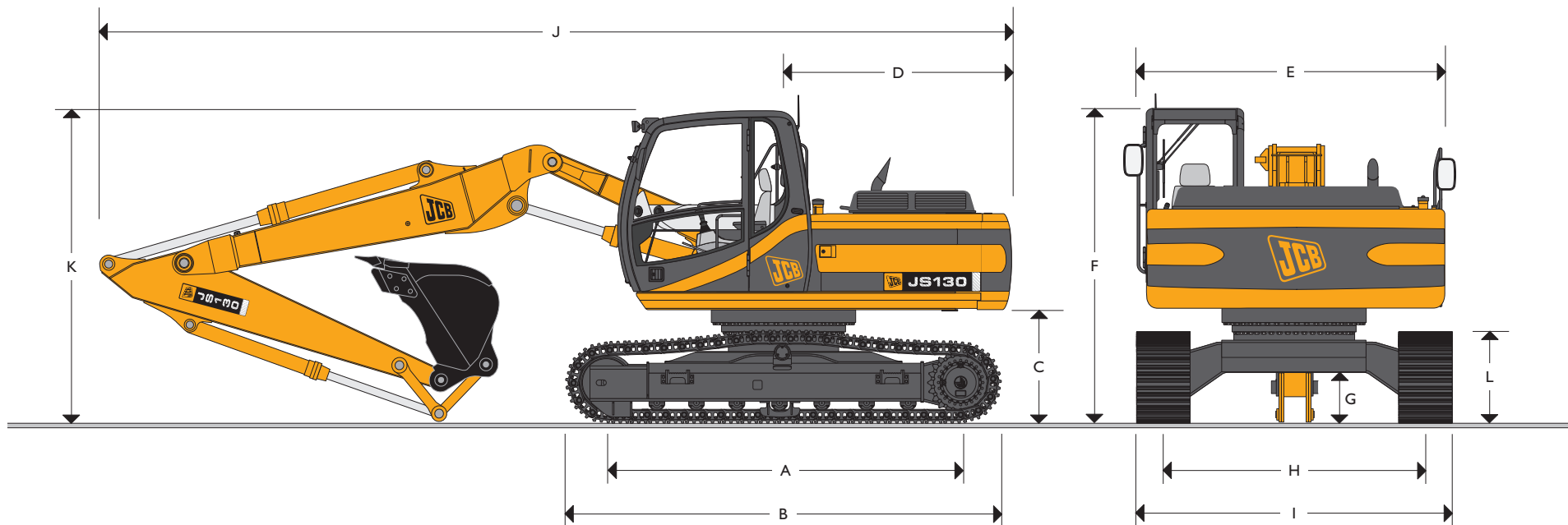


MAX. OPERATING WEIGHT

13900 kg

NETT ENGINE POWER

63 kW (85 hp)

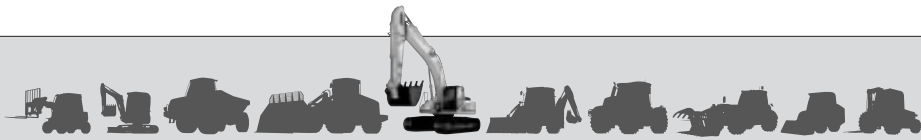


STATIC DIMENSIONS

Dimensions in millimetres (ft-in)		
A	Track length on ground	2780 (9-1)
B	Undercarriage overall length	3550 (11-8)
C	Counterweight clearance	910 (3-0)
D	Tail swing radius	2050 (6-9)
E	Overall width of superstructure	2410 (7-11)
F	Height over cab	2695 (8-10)
G	Ground clearance	460 (1-6)
H	Track gauge	1990 (6-6)
I	Width of tracks (500mm shoes)	2490 (8-2)
I	Width of tracks (600mm shoes)	2590 (8-6)

Dimensions in millimetres (ft-in)		
I	Width of tracks (700mm shoes)	2690 (8-10)
I	Width of tracks (850mm shoes)	2840 (9-4)
J	Transport length (2.10 dipper)	7310 (23-11)
J	Transport length (2.50 dipper)	7650 (25-0)
J	Transport length (3.00 dipper)*	7890 (25-10)
K	Transport height (2.10 dipper)	3040 (9-11)
K	Transport height (2.50 dipper)	3040 (9-11)
K	Transport height (3.00 dipper)*	3040 (9-11)
L	Track height	815 (2-8)

*Machine in transport position



JCB TRACKED EXCAVATOR | JS I30 L T.A.B.



ENGINE

Type	Water cooled, 4-stroke, 4-cylinder in-line, direct injection, turbocharged diesel.
Nett power (SAE J1349 and 80/1269/EEC)	63kW (85hp) at 2200rpm.
Piston Displacement	4.329 litres (264 cu.in.).
Air Filtration	Dry element with secondary safety element and in cab warning indicator.
Cooling	Water cooler via large capacity radiator with anti block "wavy" fins and protected by a separate fine mesh grille.
Starting system	24 volt.
Batteries	2 x 12 volt Heavy Duty.
Alternator	24 volt 40 amp.

SWING SYSTEM

Swing motor	Axial piston type.
Swing brake	Hydraulic braking plus automatic spring applied disc type parking brake.
Final drive	Planetary reduction.
Swing speed	13.4 rpm.
Swing gear	Large diameter, internally toothed fully sealed grease bath lubricated.
Swing lock	Multi position switchable brake.

UNDERCARRIAGE

Construction	Fully welded, "X" frame type with central bellyguarding and sloping sidemembers with dirt relief holes under top rollers.
Recovery point	Front and rear.
Upper & lower rollers	Heat treated, sealed and lubricated.
Track adjustment	Grease cylinder type.
Track type	Sealed and lubricated.
Track idler	Sealed and lubricated, with spring cushioned recoil.
Track shoes	500mm (20in.) triple grouser 600mm (24in.) triple grouser 700mm (28in.) triple grouser 850mm (33in.) triple grouser
Rollers and Shoes (each side)	Upper rollers 1 Lower rollers 7 Track shoes 44

HYDRAULIC SYSTEM

A variable flow load sensing system with flow on demand, variable power output and servo operated, multi-function open centre control.

Pumps

Main pumps	2 variable displacement axial piston type.
Maximum flow	2 x 121 L/min (2 x 26.6 UK GPM).
Servo pump	Gear type.
Maximum flow	20 L/min (4.4 UK GPM).

Control valve

A combined four and five spool control valve with auxiliary service spool as standard. When required twin pump flow is combined to boom, dipper and bucket services for greater speed and efficiency.

Relief valve settings

Boom/Arm/Bucket	318 bar (4610lb/sq.in)
With power boost	343 bar (4975lb/sq.in)
Swing circuit	279 bar (4045lb/sq.in)
Travel circuit	343 bar (4975lb/sq.in)
Pilot control	40 bar (569lb/sq.in)

A separate Cushion Control valve in the servo system provides cushioning of the boom and dipper spools selection and quick warm-up of the servo system.

Hydraulic cylinders

Double acting type, with bolt-up end caps and hardened steel bearing bushes. End cushioning is fitted as standard on boom, dipper and bucket rams.

Filtration

The hydraulic components are protected by the highest standard of filtration to ensure long hydraulic fluid and component life.

In tank	150 micron, suction strainer.
Main return line	10 micron, fibreform element.
Plexus Bypass line	1.5 micron, paper element.
Pilot line	10 micron, paper element.
Hydraulic hammer return	10 micron, reinforced microform element.

Cooling

Worldwide cooling is provided via a full return line air blast cooler with anti-block wavy cooling fins and separate easy clean fine mesh grill.

TRACK DRIVE

Type	Fully hydrostatic, three speed with autoshift.
Travel motors	Variable swash axial piston type, fully guarded within undercarriage frame.
Final drive	Planetary reduction, bolt-on sprockets.
Service brake	Hydraulic counter balance valve to prevent overspeeding on gradients.
Park brake	Disc type, spring applied, automatic hydraulic release.
Gradeability	70% (35 deg) continuous.
Travel speed	High – 5.5 km/h (3.4 mph). Mid – 3.3 km/h (2.1 mph). Low – 2.3 km/h (1.4 mph).
Tractive effort	104kN (10600kgf, 23369lb).



JCB TRACKED EXCAVATOR | JS I30 L T.A.B.



EXCAVATOR END

Triple Articulated Boom (T.A.B.) with a choice of dipper lengths to suit the requirements of reach, dig-depth, loadover height, tearouts and site versatility. Reserve strength is built into the fully welded structures for hydraulic hammer and other arduous operations.

Fabricated bucket tipping links are provided with a choice of lift points.

CAB

Pressed steel with high strength rolled section frame. All tinted safety glass windows with fully opening two piece windscreen and in screen stowage. Gas strut assisted. Parallelogram wash/wiper. Opening door windows. Fan force fresh air ventilation and heater with windscreen demister. Fully adjustable deluxe suspension seat with armrest and backrest recline. Radio cassette player with digital tuning. Cigarette lighter. Digital clock and storage box are standard fitment.

AMS – ADVANCED MANAGEMENT SYSTEM

Advanced Management System

The heart of the system is the in-cab monitor unit. This gives a graphical display of fuel level, engine and hydraulic oil temperatures, in addition to audio visual warnings and function selection.

The AMS matches engine power and pump output to optimize machine performance in each of the four selectable work modes –

- H (Heavy)** 100% engine and hydraulic power for maximum output
- S (Standard)** 90% engine and hydraulic power for economical output
- L (Light)** 70% engine and hydraulic power for precision grading and low fuel consumption
- F (Fine)** 70% power with permanent power boost for maximum lifting ability

The monitor and service tool can be used to check the function of pressure switches, solenoids and actual values on monitor gauges. It is easy to amend the preset languages shown on the monitor. Using a service tool additional languages can be made available. A maintenance indicator illuminates at the required service interval to make the operator aware of an imminent service. All servicing and basic checks can be carried out using the cab monitor display. A service tool connected to the monitor can be used for more detailed diagnostics and machine history analysis.

CONTROLS

- Excavator** All servo lever operated, to ISO control pattern, independently adjustable to the seat.
- Tracks** Individually servo operated by foot pedal or hand lever.
Speed selection via foot operated switch with autoshift override.
- Auxiliary** Via servo operated foot pedal.
- Low flow** Via switch in RH servo lever.
- Controls isolation** Gate lock lever at cab entrance and a console mounted switch.
- Engine speed** Dial type throttle control plus servo lever mounted one-touch control and separate selectable auto-idle.
- Engine stop** Ignition key operated and separate shut-down button.
- Power boost** Via servo lever mounted button.
- Horn** Operated via servo lever mounted button with two level control switch in the console.

SERVICE CAPACITIES

	Litres	UK Gal
Fuel tank	240.0	52.8
Engine coolant	16.4	3.8
Engine oil	12.1	2.7
Swing reduction gear	2.2	0.5
Track reduction gear (each side)	3.0	0.7
Hydraulic system	124.0	27.3
Hydraulic tank	73.0	16.1

WEIGHTS AND GROUND BEARING PRESSURES

Machine equipped with Monoboom, Dipper Arm, Standard Excavating Bucket, operator and full fuel tank.

Shoe Width	Operating Weight	Bearing Pressure
500mm (20in.)	13710kg (30225lb)	0.42kg/sq. cm. (5.97lb/sq. in.)
600mm (24in.)	13900kg (30645lb)	0.36kg/sq. cm. (5.12lb/sq. in.)
700mm (28in.)	14100kg (31085lb)	0.32kg/sq. cm. (4.55lb/sq. in.)
850mm (33in.)	14390kg (31725lb)	0.26kg/sq. cm. (3.70lb/sq. in.)

STANDARD EXCAVATING BUCKETS

All buckets are JCB – Escó type fully welded steel, with sealed, hardened steel pivot pins and replaceable wear parts.

Max Width	Capacity (SAE heaped)	Weight
600mm (24in.)	0.32cu.m (0.42cu.yd)	369kg (814lb)
750mm (30in.)	0.43cu.m (0.56cu.yd)	423kg (933lb)
900mm (36in.)	0.55cu.m (0.72cu.yd)	468kg (1032lb)
1000mm (40in.)	0.63cu.m (0.82cu.yd)	507kg (1118lb)
1100mm (44in.)	0.72cu.m (0.94cu.yd)	537kg (1184lb)
1200mm (48in.)	0.80cu.m (1.05cu.yd)	576kg (1270lb)

STANDARD & OPTIONAL EQUIPMENT

Standard Equipment: Engine fan guard; Cold start pre-heat; Auto engine warm up; Double element air cleaner; Radiator fine mesh grille; Heavy duty alternator; Electrics isolator; Heavy duty batteries; Cab & engine soundproofing; Cab heater & screen demister; Tinted glass; Radio & cassette player; Interior light; Coat hook; Operator's storage box; Removable floor mat; Windscreen wash/wipe; Plug-in power socket; Power boost; Auto-idle; One-touch engine speed control; Hydraulic cushion control; Plexus hydraulic oil filtration; HSP pressure test points; Auxiliary pipework mounting brackets; Work lights – boom & mainframe mounted; Undercarriage belly guarding; Upper structure under covers; Tool kit & storage area; External mirrors; Handrail & nonslip pads.

Optional Equipment: Hose burst check valves & Overload warning system; Tipping link mounted lift points; General purpose buckets; Ditch/grading buckets; Quickhitch buckets; Hydraulic hammers; Auxiliary pipework (full and low flow); Rain guard; Air conditioning; Cab mounted & rear work lights; Rotating beacon; Electric refuelling pump; Single or twin track guides; Biodegradable oil; Sun visor; Whole machine lifting points; Rain visor; Air suspension seat.



JCB TRACKED EXCAVATOR | JS 130 L T.A.B.



WORKING RANGE

Boom length: 4.70m

Dipper length:		2.10m
A	Maximum digging reach	mm (ft-in) 8360 (27-5)
B	Maximum digging reach (on ground)	mm (ft-in) 8140 (26-8)
C	Maximum digging depth	mm (ft-in) 5350 (17-6)
D	Maximum digging height	mm (ft-in) 9345 (30-8)
E	Maximum dumping height	mm (ft-in) 6945 (31-7)
F	Maximum vertical wall cut depth	mm (ft-in) 4910 (16-1)
G	Minimum swing radius	mm (ft-in) 2050 (6-9)
	Bucket rotation	182°
	Dipper tearout	kgf (lbf) 8843 (19500)
	Dipper tearout with boost	kgf (lbf) 9570 (21100)
	Bucket tearout	kgf (lbf) 7720 (17020)
	Bucket tearout with boost	kgf (lbf) 8350 (18410)

Dipper length:

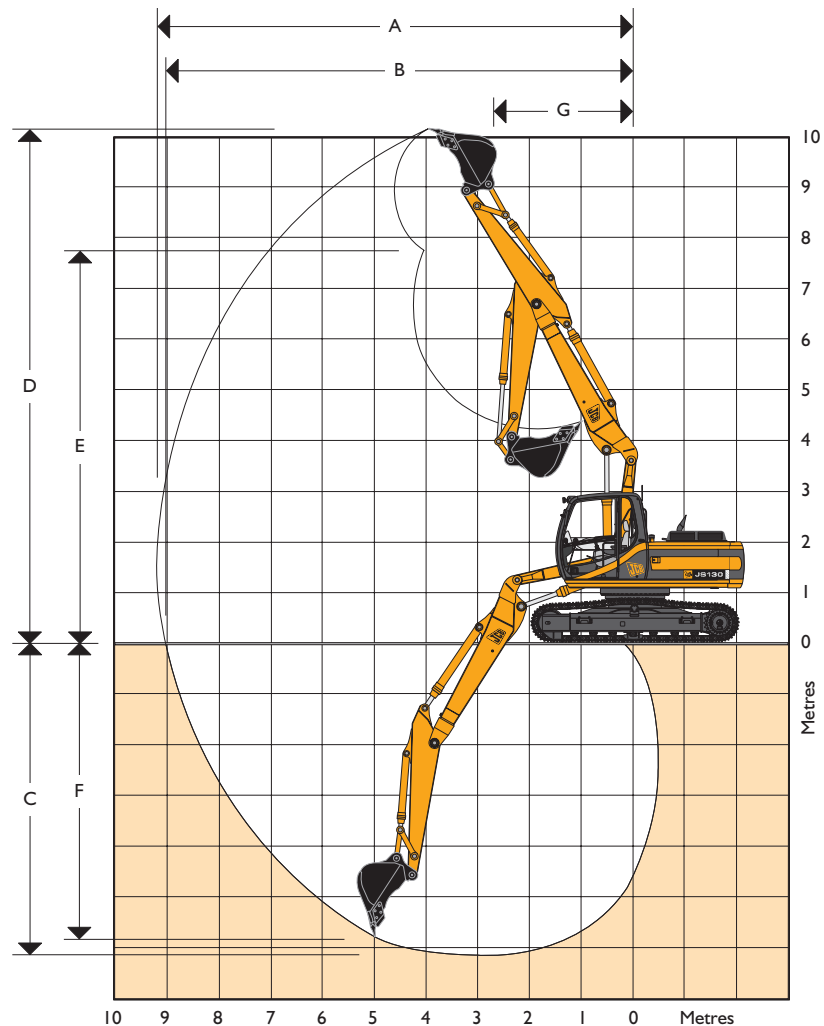
2.50m

A	Maximum digging reach	mm (ft-in) 8750 (28-8)
B	Maximum digging reach (on ground)	mm (ft-in) 8525 (28-0)
C	Maximum digging depth	mm (ft-in) 5755 (18-10)
D	Maximum digging height	mm (ft-in) 9670 (31-8)
E	Maximum dumping height	mm (ft-in) 7245 (23-9)
F	Maximum vertical wall cut depth	mm (ft-in) 5310 (17-6)
G	Minimum swing radius	mm (ft-in) 2050 (6-9)
	Bucket rotation	182°
	Dipper tearout	kgf (lbf) 7340 (16180)
	Dipper tearout with boost	kgf (lbf) 8040 (17725)
	Bucket tearout	kgf (lbf) 7720 (17020)
	Bucket tearout with boost	kgf (lbf) 8350 (18410)

Dipper length:

3.00m

A	Maximum digging reach	mm (ft-in) 9235 (30-3)
B	Maximum digging reach (on ground)	mm (ft-in) 9000 (29-6)
C	Maximum digging depth	mm (ft-in) 6260 (0-6)
D	Maximum digging height	mm (ft-in) 10070 (33-0)
E	Maximum dumping height	mm (ft-in) 7620 (25-0)
F	Maximum vertical wall cut depth	mm (ft-in) 5770 (18-11)
G	Minimum swing radius	mm (ft-in) 2410 (7-11)
	Bucket rotation	182°
	Dipper tearout	kgf (lbf) 6190 (13650)
	Dipper tearout with boost	kgf (lbf) 6700 (14770)
	Bucket tearout	kgf (lbf) 7720 (13020)
	Bucket tearout with boost	kgf (lbf) 8350 (18410)





JCB TRACKED EXCAVATOR | JS I30 L T.A.B.



LIFT CAPACITIES – Dipper Length: 2.10m, Monoboom, Trackshoes: 600mm, Bucket: 0.55m³, Weight: 468kg.

JSI30 L T.A.B.

Reach	4m (13ft 1in)		5m (16ft 5in)		6m (19ft 8in)		7m (23ft 0in)	
Load Point Ht.	kg	kg	kg	kg	kg	kg	kg	kg
6.0m (19ft-8in)	2951*	2951*	2964*	2844				
5.0m (16ft-5in)	3191*	3191*	2996*	2821	2691	1966		
4.0m (13ft-1in)	3742*	3742*	3264*	2722	2665	1941		
3.0m (9ft-10in)	4507*	3723	3555	2583	2592	1873		
2.0m (6ft-6in)	4873	3446	3397	2436	2507	1793	1905	1340
0m	4553	3152	3179	2234	2377	1670		
- 2.0m (- 6ft-6in)	4878	3446	3397	2436	2507	1793	1905	1340
- 3.0m (- 9ft-10in)	4507*	3723	3555	2583	2592	1873		
- 4.0m (- 13ft-1in)	3742*	3742*	3264*	2722	2665	1941		

LIFT CAPACITIES – Dipper Length: 2.50m, Monoboom, Trackshoes: 600mm, Bucket: 0.47m³, Weight: 438kg.

JSI30 L T.A.B.

Reach	4m (13ft 1in)		5m (16ft 5in)		6m (19ft 8in)		7m (23ft 0in)	
Load Point Ht.	kg	kg	kg	kg	kg	kg	kg	kg
6.0m (19ft-8in)	2606*	2606*	2655*	2655*	2073*	2018		
5.0m (16ft-5in)	2860*	2860*	2747*	2747*	2711*	2053		
4.0m (13ft-1in)	3404*	3404*	3036*	2806	2734	2007	2019	1449
3.0m (9ft-10in)	4170*	3850	3455*	2660	2652	1929	1994	1425
2.0m (6ft-6in)	4994*	3555	3467	2501	2557	1840	1948	1381
0m	4952	3188	3211	2264	2401	1693	1866	1303
- 2.0m (- 6ft-6in)	4994*	3555	3467	2501	2557	1840	1948	1381
- 3.0m (- 9ft-10in)	4170*	3850	3455*	2660	2652	1929	1994	1425
- 4.0m (- 13ft-1in)	3404*	3404*	3036*	2806	2734	2007	2019	1449

LIFT CAPACITIES – Dipper Length: 3.00m, Monoboom, Trackshoes: 700mm, Bucket: 0.32m³, Weight: 369kg.

JSI30 L T.A.B.

Reach	4m (13ft 1in)		5m (16ft 5in)		6m (19ft 8in)		7m (23ft 0in)	
Load Point Ht.	kg	kg	kg	kg	kg	kg	kg	kg
6.0m (19ft-8in)			2300*	2300*	2422*	2109		
5.0m (16ft-5in)			2427*	2427*	2428*	2099	2072	1498
4.0m (13ft-1in)	2956*	2956*	2728*	2728*	2585*	2039	2060	1487
3.0m (9ft-10in)	3712*	3712*	3160*	2698	2675	1950	2013	1442
2.0m (6ft-6in)	4568*	3610	3491	2522	2566	1847	1953	1385
0m	4546	3146	3181	2235	2376	1669	1841	1279
- 2.0m (- 6ft-6in)	4568*	3610	3491	2522	2566	1847	1953	1385
- 3.0m (- 9ft-10in)	3712*	3712*	3160*	2698	2675	1950	2013	1442
- 4.0m (- 13ft-1in)	2956*	2956*	2728*	2728*	2585*	2039	2060	1487

Lift capacity front and rear.

Lift capacity full circle.

- Notes:**
1. Lifting capacities are based on ISO 10567, that is: 75% of minimum tipping load or 87% of hydraulic lift capacity, whichever is the less. Lifting capacities marked* are based on hydraulic capacity.
 2. Lift capacities assume that the machine is on firm, level ground and equipped with an approved lifting point and bucket.
 3. Lift capacities may be limited by local regulations. Please refer to your dealer.



A GLOBAL COMMITMENT TO QUALITY

JCB's total commitment to its products and customers has helped it grow from a one-man business into Britain's largest privately owned manufacturer of backhoe loaders, crawler excavators, wheeled excavators, telescopic handlers, wheeled loaders, dump trucks, rough terrain fork lifts, industrial fork lifts, mini/midi excavators, skid steer loaders and tractors.

By making constant and massive investments in the latest production technology, the JCB factories have become some of the most advanced in Europe.

By leading the field in innovative research and design, extensive testing and stringent quality control, JCB machines have become renowned all over the world for performance, value and reliability.

And with a global sales and service network of over 400 distributors and agents, the company exports over 70% of its production to all five continents.

Through setting the standards by which others are judged, JCB has become one of Britain's most impressive success stories.

